

Ty1 antibody

Cat. No. C15200054

Lot:	008
Size:	50 µg
Type:	Monoclonal, ChIP grade
Isotype:	IgG1
Source:	Mouse
Concentration:	1.9 µg/µl

Specificity:	/
Purity:	Protein A purified monoclonal antibody.

Storage buffer: PBS containing 0.05% azide.

Storage: Store at -20°C; for long storage, store at -80°C. Avoid multiple freeze-thaw cycles.

Precautions: This product is for research use only. Not for use in diagnostic or therapeutic procedures.

Description: Monoclonal antibody raised in mouse against the Ty1 tag (amino acid sequence EVHTNQDPLD).

Applications

Applications	Suggested dilution	References
ChIP*	2 µg per ChIP	Fig 1
Western blotting	1:1,000 – 1:1,5000	Fig 2

*Please note that the optimal antibody amount per IP should be determined by the end-user. We recommend testing 1–5 µg per IP.

Diagenode SA. BELGIUM | EUROPE

LIEGE SCIENCE PARK
Rue du Bois Saint-Jean, 3
4102 Seraing - Belgium
Tel: +32 4 364 20 50
Fax: +32 4 364 20 51
orders.diagenode@hologic.com
support.diagenode@hologic.com

Diagenode LLC. USA | NORTH AMERICA

400 Morris Avenue, Suite 101
Denville, NJ 07834 - USA
Tel: +1 862 209-4680
Fax: +1 862 209-4681
orders.na@diagenode.com
info.na@diagenode.com

Last update: November, 2024

Results

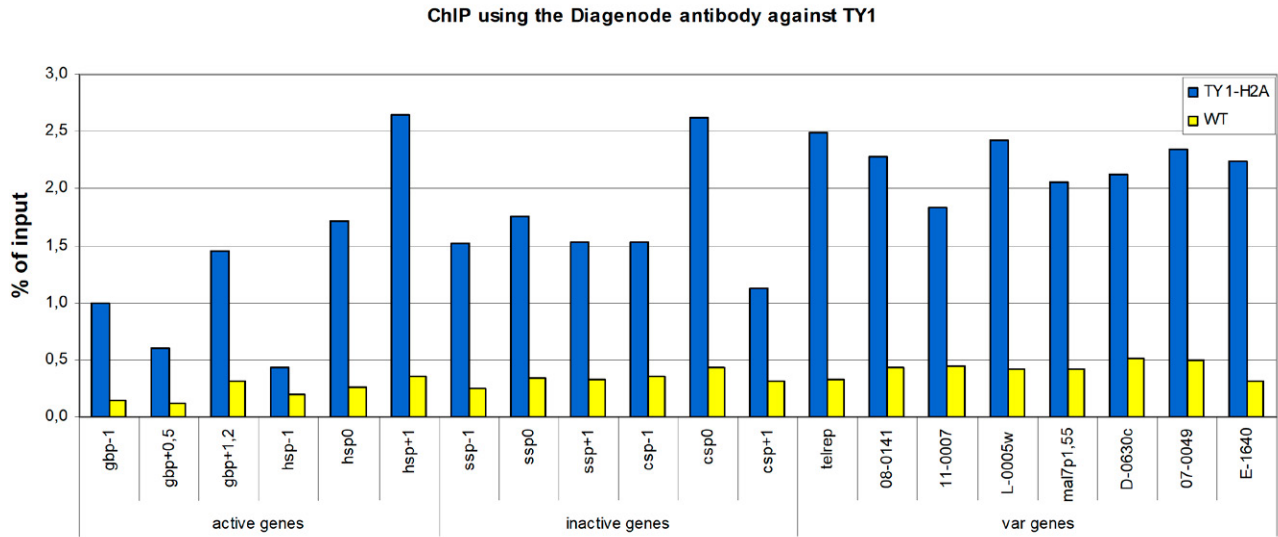


Figure 1: ChIP results obtained with the Diagenode monoclonal antibody against the Ty1 tag

ChIP assays were performed using *Plasmodium falciparum* cells stably expressing Ty1-H2A (blue bars) and wild type *Plasmodium falciparum* cells (yellow bars). Primer pairs were used for active genes, inactive genes, and variable genes. Sheared chromatin from 1x10⁶ cells and 2 µg of antibody against Ty1 (cat. No. C15200054) were used per ChIP experiment.

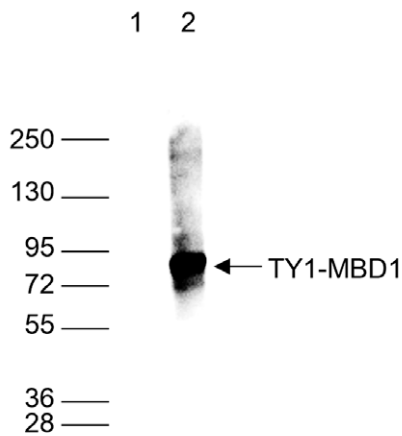


Figure 2: Western blot analysis using the Diagenode monoclonal antibody against the Ty1 tag

Western blot was performed on protein extracts from HeLa cells (lane 1) and on HeLa cells transfected with a Ty1 tagged MBD1 protein (lane 2) using the Diagenode antibody against Ty1 (cat. No. C15200054). The antibody was diluted 1:1,000 in TBS-Tween containing 5% skimmed milk. The position of the protein of interest is indicated on the right, the marker (in kDa) is shown on the left.