

## CRBN antibody

**Cat. No.** C15200245

**Type:** Monoclonal

**Isotype** IgG1

**Source:** Mouse

**Lot:** 002

**Size:** 50 µg

**Concentration:** 2 µg/µl

**Specificity:** Human: positive  
Other species: not tested.

**Purity:** Protein G purified monoclonal antibody.

**Storage:** Store at -20°C; for long storage, store at -80°C. Avoid multiple freeze-thaw cycles.

**Storage buffer:** TBS containing 0.05 % Na-azide.

**Precautions:** This product is for research use only. Not for use in diagnostic or therapeutic procedures.

**Description:** Monoclonal antibody raised in mouse against the N-terminus of human CRBN (Cereblon).

**Other names:** Cereblon, MRT2, MRT2A, Protein X 0001

### Applications

Applications	Suggested dilution	References
Western blotting	1:500 - 1:1,000	Fig 1
Immunoprecipitation	1:200	Fig 2

### Target description

CRBN (UniProt/Swiss-Prot entry Q96SW2) is a cytoplasmic protease that is related to the Lon protease protein family. It mediates the ubiquitination and subsequent proteasomal degradation of target proteins, such as MEIS2. CRBN is associated with a calcium channel membrane protein and is thought to play a role in brain development and in memory and learning by regulating the assembly and neuronal surface expression of large-conductance calcium-activated potassium channels brain through its interaction with KCNT1. Mutations in the CRBN gene are associated with autosomal recessive nonsyndromic cognitive disability.

#### Diagenode sa. BELGIUM | EUROPE

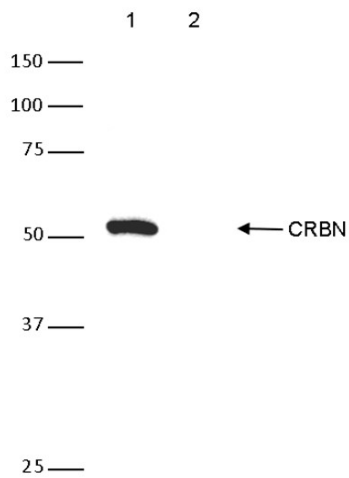
LIEGE SCIENCE PARK  
Rue du Bois Saint-Jean, 3  
4102 Seraing - Belgium  
Tel: +32 4 364 20 50  
Fax: +32 4 364 20 51  
orders@diagenode.com  
info@diagenode.com

#### Diagenode LLC. USA | NORTH AMERICA

400 Morris Avenue, Suite 101  
Denville, NJ 07834 - USA  
Tel: +1 862 209-4680  
Fax: +1 862 209-4681  
orders.na@diagenode.com  
info.na@diagenode.com

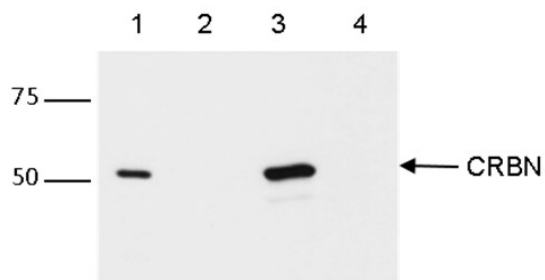
Last update: June, 2022

## Results



**Figure 1. Western blot analysis using the Diagenode monoclonal antibody directed against CRBN**

Western blot was performed on 20 µg protein extracts from wild type MOLT4 cells (lane 1) or MOLT4-CRBN<sup>-/-</sup> cells (lane 2) using the Diagenode antibody against CRBN (cat. No. C15200245) diluted 1:500 in PBS-Tween containing 0.5% NFDM. The marker is shown on the left, position of the CRBN protein is indicated on the right.



**Figure 2. IP using the Diagenode monoclonal antibody directed against CRBN**

IP was performed on whole cell extracts (400 µg) from either MOLT4 wildtype (lane 1, 3) or MOLT4 CRBN<sup>-/-</sup> cells (lane 2, 4) using the Diagenode antibody against CRBN (cat. No. C15200245). The immunoprecipitated proteins were subsequently analysed by Western blot with the antibody as described above. Lane 3 and 4 show the result of the IP, the input (20 µg) is shown lane 1 and 2.