

Dre antibody

Cat. No. C15310170

Lot:	A1042-004	Specificity:	NA
Size:	100 µg	Purity:	Whole antiserum from rabbit containing 0.05% azide.
Type:	Polyclonal	Storage	
Isotype:	NA	buffer:	NA
Source:	Rabbit		
Concentration:	not determined		

Storage: Store at -20°C; for long storage, store at -80°C. Avoid multiple freeze-thaw cycles.

Precautions: This product is for research use only. Not for use in diagnostic or therapeutic procedures.

Description: Polyclonal antibody raised in rabbit against Dre recombinase using a KLH-conjugated synthetic peptide located at the C-terminal part of the protein.

Applications

Applications	Suggested dilution	References
ELISA	1:1,000	Fig 1
Western blotting	1:500	Fig 2

Target description

Dre recombinase originates from bacteriophage D6 and recognizes rox sites in the genome. It catalyzes recombination between two rox sites, thereby excising the intervening DNA sequence. Dre recombinase is used as a tool for the generation of transgenic animals.

Diagenode, SA. BELGIUM | EUROPE

LIEGE SCIENCE PARK
Rue du Bois Saint-Jean, 3
4102 Seraing - Belgium
Tel: +32 4 364 20 50
Fax: +32 4 364 20 51
orders.diagenode@hologic.com
support.diagenode@hologic.com

Diagenode, LLC. USA | NORTH AMERICA

400 Morris Avenue, Suite 101
Denville, NJ 07834 - USA
Tel: +1 862 209-4680
Fax: +1 862 209-4681
orders.na@diagenode.com
info.na@diagenode.com

Last update: January, 2025

Results

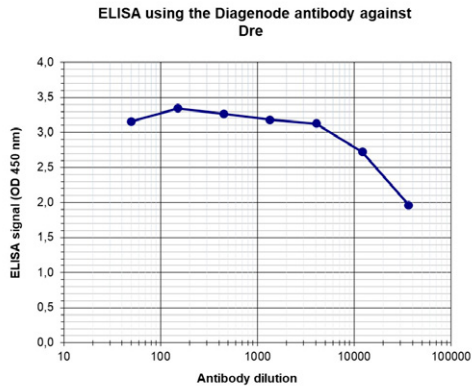


Figure 1: Determination of the titer

To determine the titer, an ELISA was performed using a serial dilution of the Hologic Diagenode antibody directed against Dre (cat. No. C15310170) in antigen coated wells. By plotting the absorbance against the antibody dilution (Figure 1), the titer of the antibody was estimated to be 1:71,000.

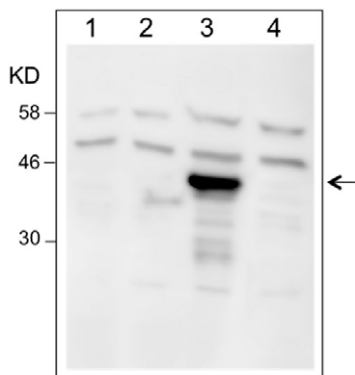


Figure 2: Western blot analysis using the Hologic Diagenode antibody directed against Dre

Western blot was performed on whole cell lysates from untransfected 293 cells (lane 1), or 293 cells transfected with Cre (lane 2), Dre (lane 3) or Flp (lane 4) with the Hologic Diagenode antibody against Dre (cat. No. C15310170), diluted 1:500 in BSA/PBS-Tween. The molecular weight marker (in KD) is shown on the left; the location of the protein of interest (expected size: 38 KD) is indicated on the right.