

RING1B polyclonal antibody - Classic

Cat. No. C15430002

Type: Polyclonal

Source: Goat

Lot #: 001

Size: 100 µg

Concentration: 1.0 µg/µl

Specificity: Human, chimpanzee, orangutan, mouse, rat, dog, bovine, frog, chicken

Purity: Affinity purified

Storage: Store at -20°C; for long storage, store at -80°C. Avoid multiple freeze-thaw cycles.

Storage Buffer: 0.02 M Potassium Phosphate, 0.15 M Sodium Chloride, 0.01% azide.

Precautions: This product is for research use only. Not for use in diagnostic or therapeutic procedures.

Applications

	Suggested dilution	Results
ELISA	1:5,000 - 1:25,000	
Immunofluorescence	1:300	Figure 1
Western blot	1:500 - 1:2,000	Figure 2

Target description

RING1B (also known as BAP1, DING, Polycomb-M33 interacting protein Ring1B, Ring finger protein 1b, Ring finger protein 2 and RNF2) is one of the PcG proteins. The polycomb group (PcG) of proteins form the multiprotein complexes that are important for the transcription repression of various genes involved in development and cell proliferation. It has been shown to interact with, and suppress the activity of, transcription factor CP2 (TFCP2/CP2). Studies of the mouse counterpart suggested the involvement of this gene in the specification of anterior-posterior axis, as well as in cell proliferation in early development. This protein was also found to interact with huntingtin interacting protein 2 (HIP2), a ubiquitin-conjugating enzyme that possesses ubiquitin ligase activity.

Results

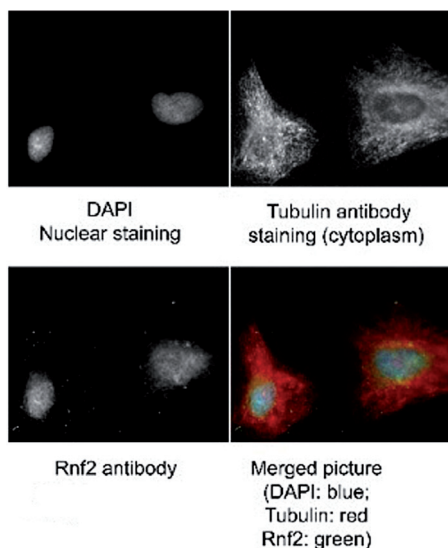


Figure 1. RING1B antibody Immunofluorescence results

Immunofluorescence of RING1B antibody. Tissue: human HeLa cells. Fixation in methanol and blocked with 0.2% fish scale gelatin for 1 hour at 25°C. Primary antibody at 1:300 for 20 minutes at 25°C. Secondary antibody: Alexa Fluor®488-conjugated Donkey anti-goat IgG secondary antibody at 1:500 for 45 min at RT. Localization: RING1B is nuclear and occasionally cytoplasmic. Staining: RING1B (RNF2) as green signal, Tubulin cytoplasm staining red, and DAPI (blue) nuclear counterstain.

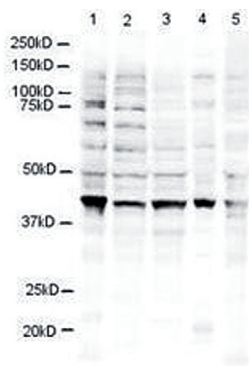


Figure 2. RING1B antibody western blot results

Western blot using the Diagenode RING1B antibody shows detection of a 38 kDa band corresponding to human RING1B in 3T3 (lane 1), U937 (lane 2), Jurkat (lane 3), mouse brain (lane 4) and CHO-K1 (lane 5) cell lysates. Approximately 20 µg of lysate was run on a SDS-PAGE and transferred onto nitrocellulose followed by reaction with a 1:500 dilution of RING1B antibody incubated at room temperature.